

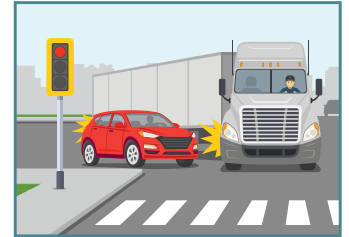
# 4

## Don't Get Squeezed



### Tractor-trailers need a lot of space when maneuvering

- They may exceed 65' in length and are 8.5' feet wide
- Due to this size, trucks make wide turns



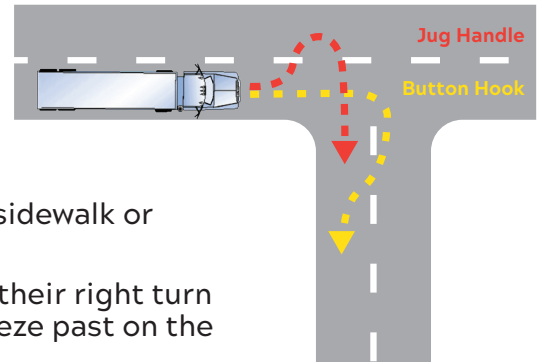
### When Making Right Turns:

Trucks may straddle lanes, set-up two lanes over, and/or start moving opposite of the direction in which they intend to turn, and may even have to cross into the oncoming lanes.

This is to prevent their trailer from running up on the curb or sidewalk or striking signs, light poles, parked cars, etc.

Quite often, as the tractor-trailer slides to the left, even with their right turn signal activated, a passenger vehicle improperly tries to squeeze past on the right side of the truck.

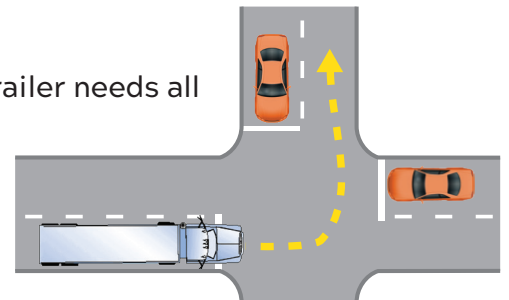
Truck drivers have very limited visibility along the passenger side while making a right turn; this will result in a passenger vehicle being squeezed off of the road or crushed.



### Left Turns

If you are at a crossroad, stay behind the stop line as a tractor-trailer needs all of the intersection to complete the turn.

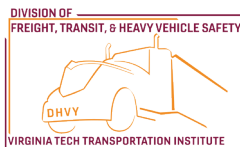
If you are past the stop line, the tractor-trailer will stop and block all traffic in the intersection until you back up out of the way or if you pull out as they are turning, they may not realize that and will run over your vehicle.



### Backing **Remember! Large trucks do not have rearview mirrors like you do in your passenger vehicle.**

- Truck drivers cannot see directly behind their trailer.
- Make it a habit to always be on the lookout for the turn signals of large trucks and be patient!

The Sharing the Road with Trucks (STR) program was developed by a team of large truck safety experts from the Virginia Tech Transportation Institute (VTTI) in response to research that found over 75% of crashes or close calls involving trucks are primarily caused by car drivers. Increased light vehicle driver knowledge on how to safely interact with large trucks on roadways can reduce these incidents. There are five key strategies for sharing the road with large trucks.



<https://cmvroadsharing.org/>